

RMK300 Installation Guide

RMK300 Control Head Remote Mount Kit

Supplied Items:

1. RMK300 SC16 - Remote Control Head Separation Cable | 16ft.
2. RMK300 MB - Remote Control Head Mounting Bracket with Screws
3. RMK300 CTRH COVER - Remote Control Head Back Cover with cable bracket and screws.

Remove the BRM300D/A Control Head

1. Push back and hold the release latch on the left side of the mobile radio.



2. Slide out the control head.



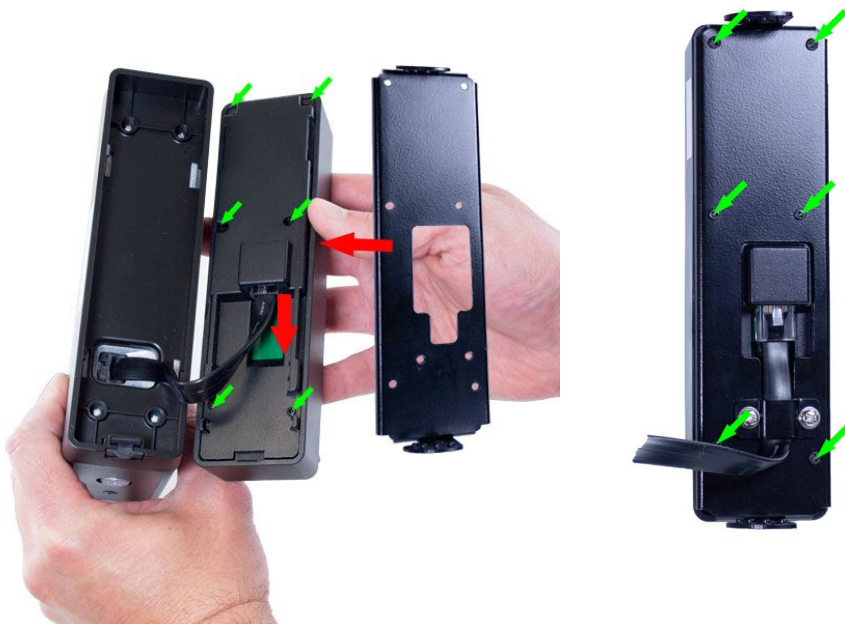
3. Detach the Control Head by disconnecting the cable between the Main Unit and the Control Head.



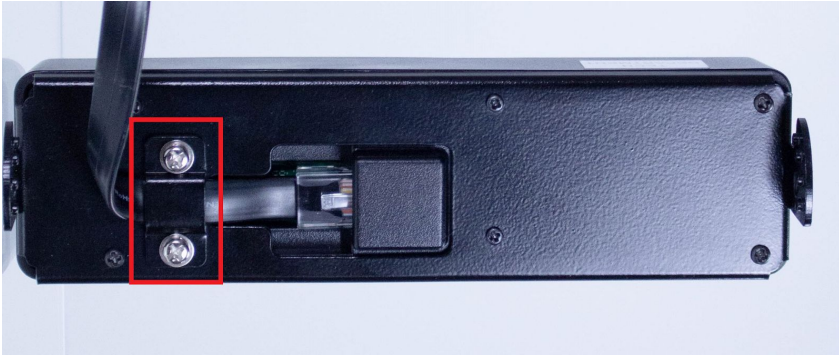
4. Remove the Control Head back cover by unscrewing the 6 screws pointed to with green arrows, as shown on the picture above (point 3).

Installing the BRM300D/A Remote Control Head Kit

1. Install the Control Head Back Cover supplied with the RMK300 kit. **Use the 6 long screws, supplied with the RMK300 kit.**



2. Connect the supplied 16 feet long RMK300 separation cable to the Control Head and install the supplied cable bracket to secure firmly the separation cable to the Control Head back cover.



3. Attach the Control Head to the Dash Mounting Bracket.



4. Mount the mobile radio Main Unit in the desired location and connect the other end of the separation cable to it.

For more information please contact:

Discount Two-Way Radio Corporation
Authorized North American Distributor and Service Center
555 W Victoria St., Compton CA 90220
Toll Free: 800-895-5122
Email: info@discounttwo-wayradio.com
Website: www.discounttwo-wayradio.com

